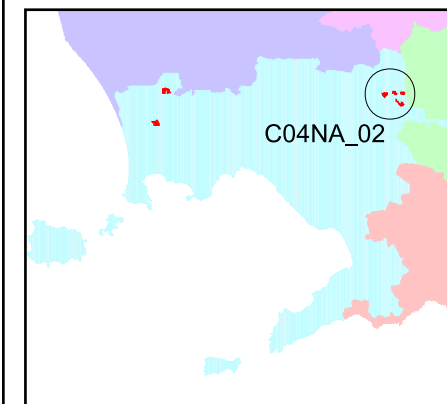
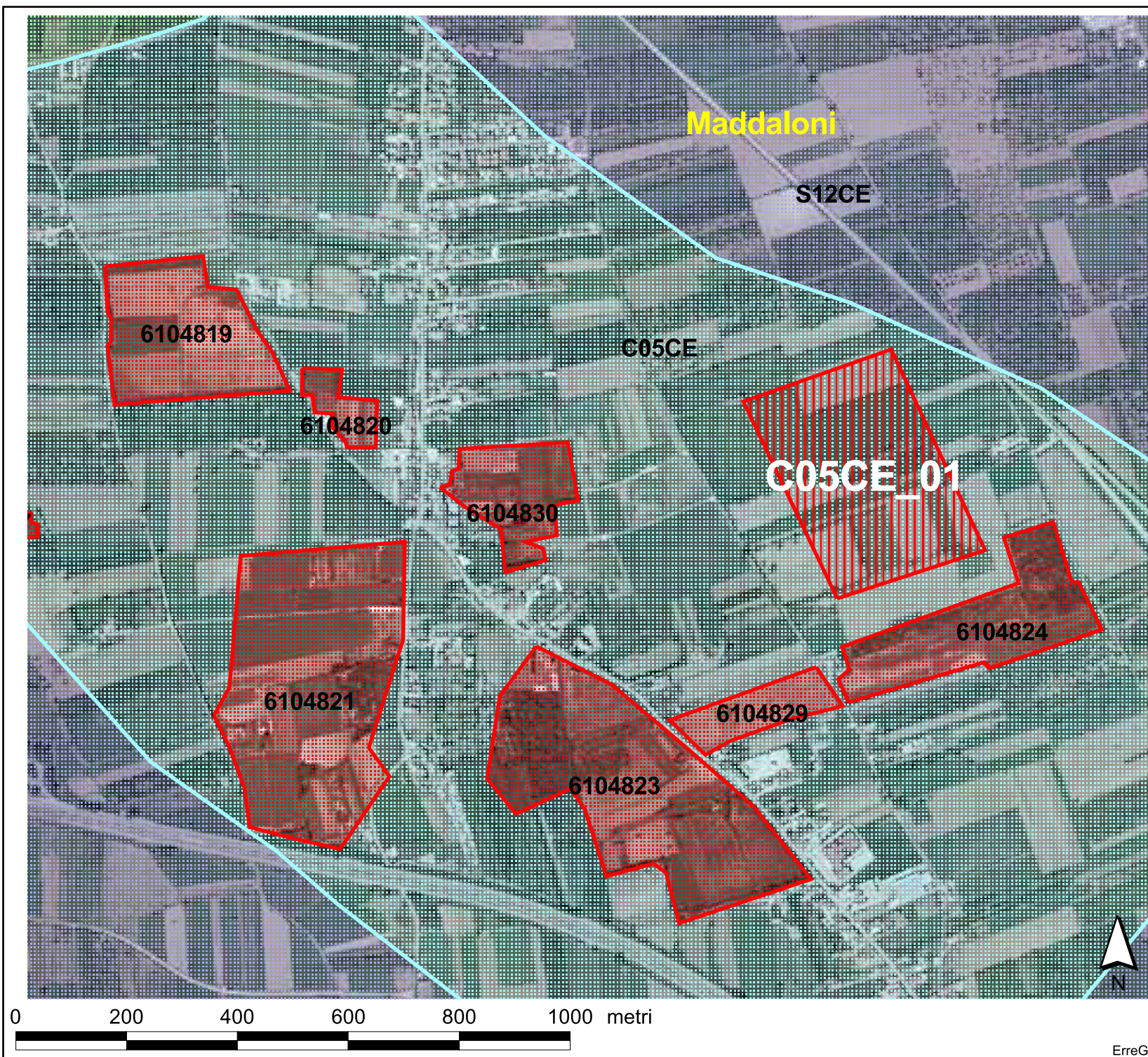


REGIONE CAMPANIA
Settore Provinciale Genio Civile
NAPOLI

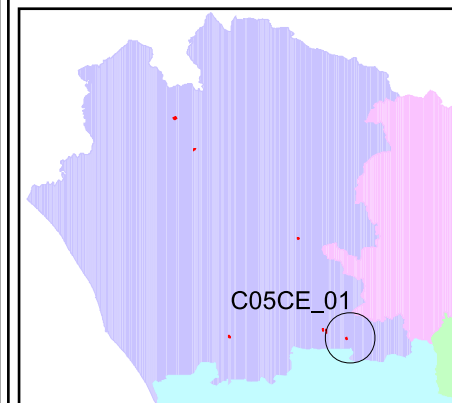


Gruppo Merceologico
IGNIMBRITE

-  Comparti
-  Aree di riserva
-  Aree suscettibili nuova estrazione
-  Aree di crisi
-  Cave
-  Limite Comune

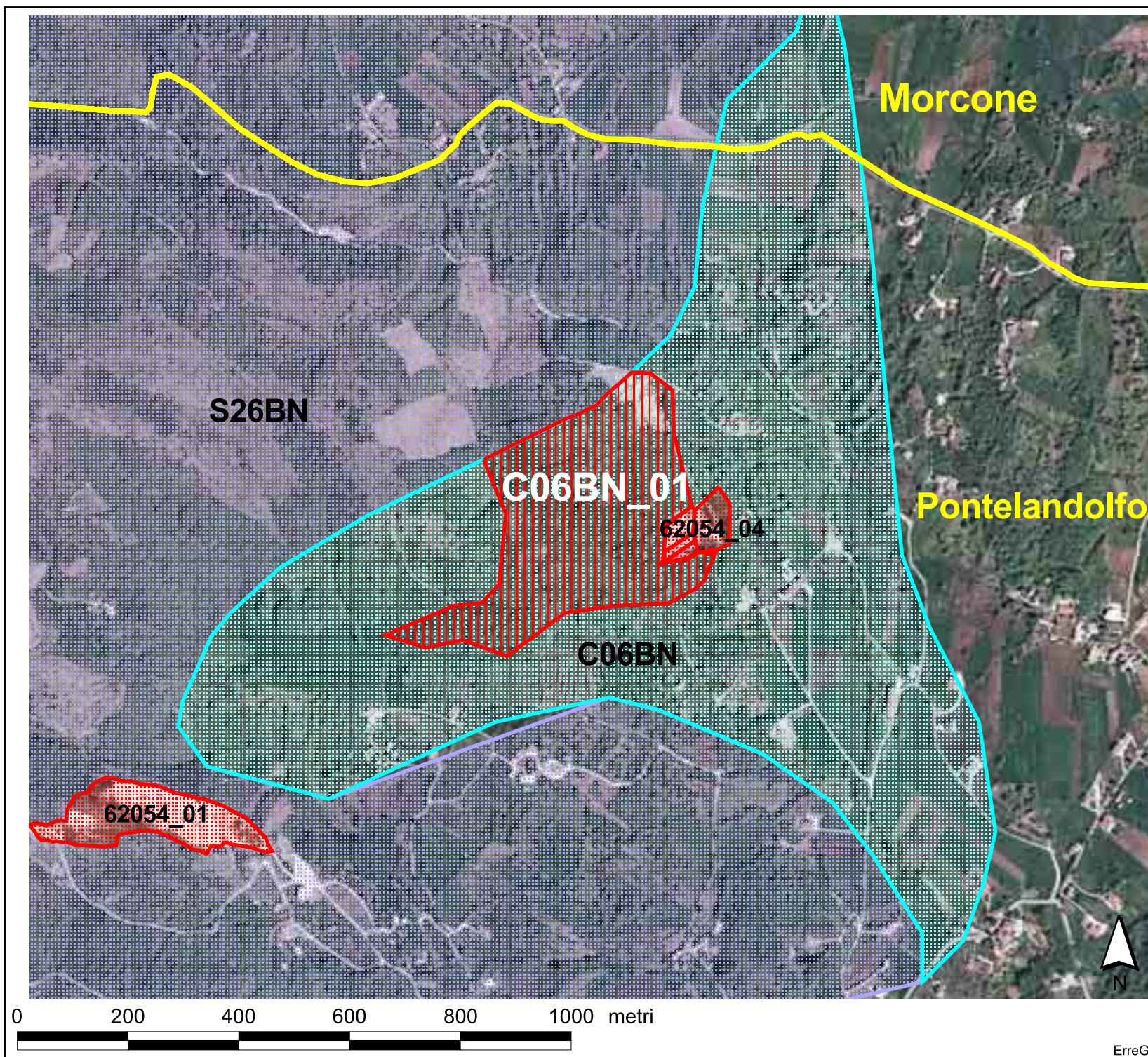


REGIONE CAMPANIA
Settore Provinciale Genio Civile
CASERTA

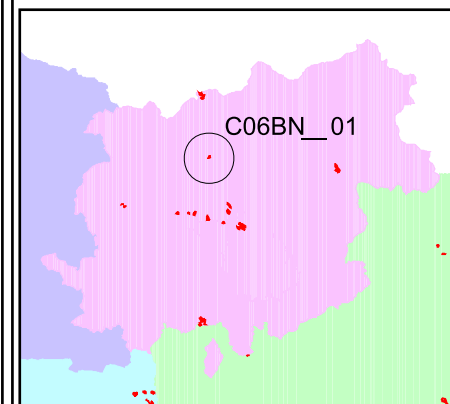


Gruppo Merceologico
TUFO GRIGIO CAMP.

-  Comparti
-  Aree di riserva
-  Aree suscettibili nuova estrazione
-  Aree di crisi
-  Cave
-  Limite Comune



REGIONE CAMPANIA
 Settore Provinciale Genio Civile
 BENEVENTO

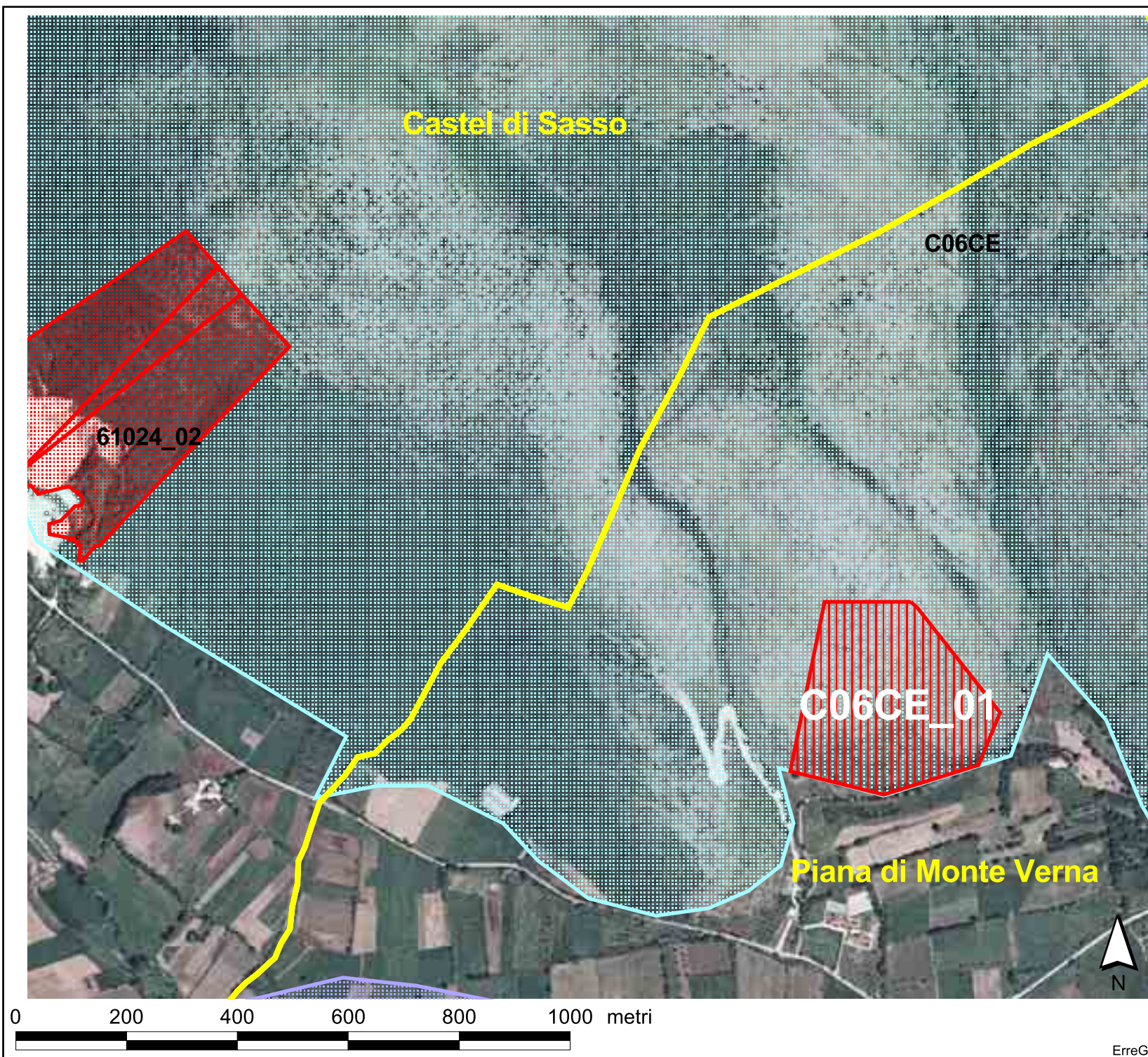


Gruppo Merceologico
 CALCAREA

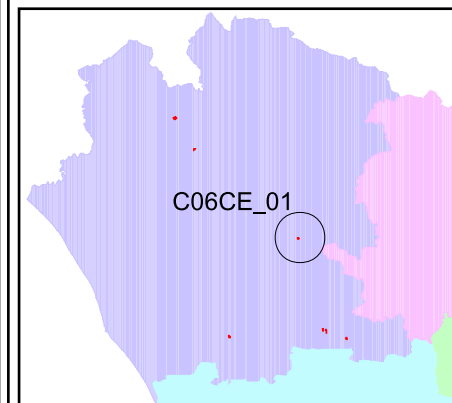
-  Comparti
-  Aree di riserva
-  Aree suscettibili nuova estrazione
-  Aree di crisi
-  Cave
-  Limite Comune



ErreGi



REGIONE CAMPANIA
 Settore Provinciale Genio Civile
 CASERTA

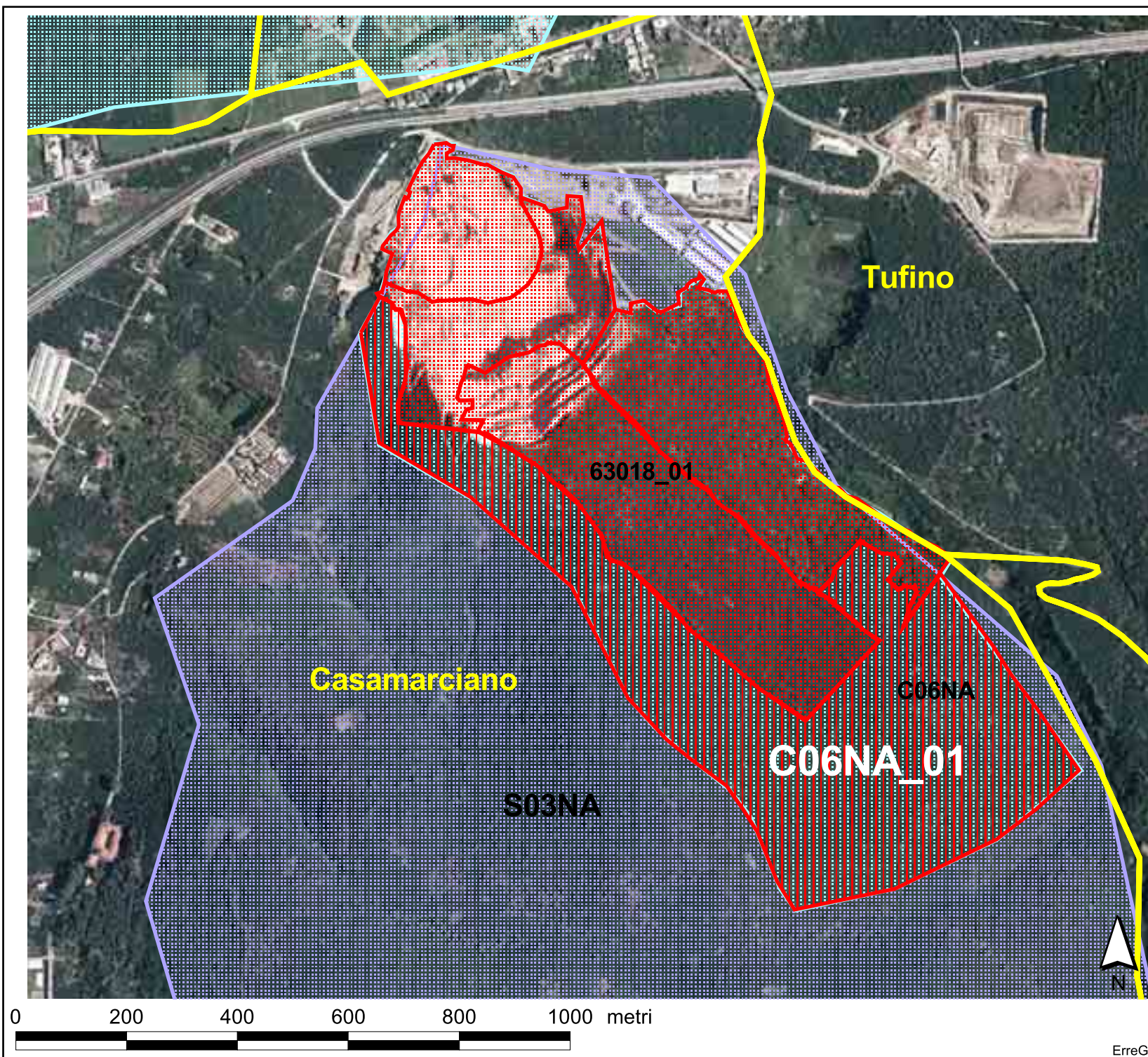


Gruppo Merceologico
 CALCARE

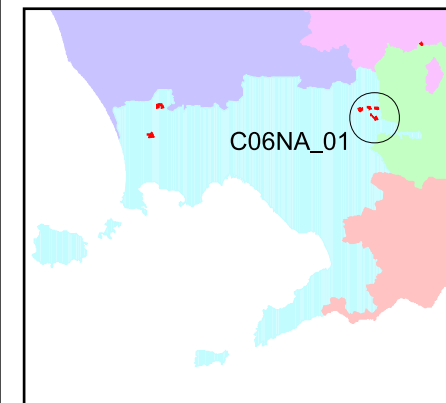
-  Comparti
-  Aree di riserva
-  Aree suscettibili nuova estrazione
-  Aree di crisi
-  Cave
-  Limite Comune



ErreGi

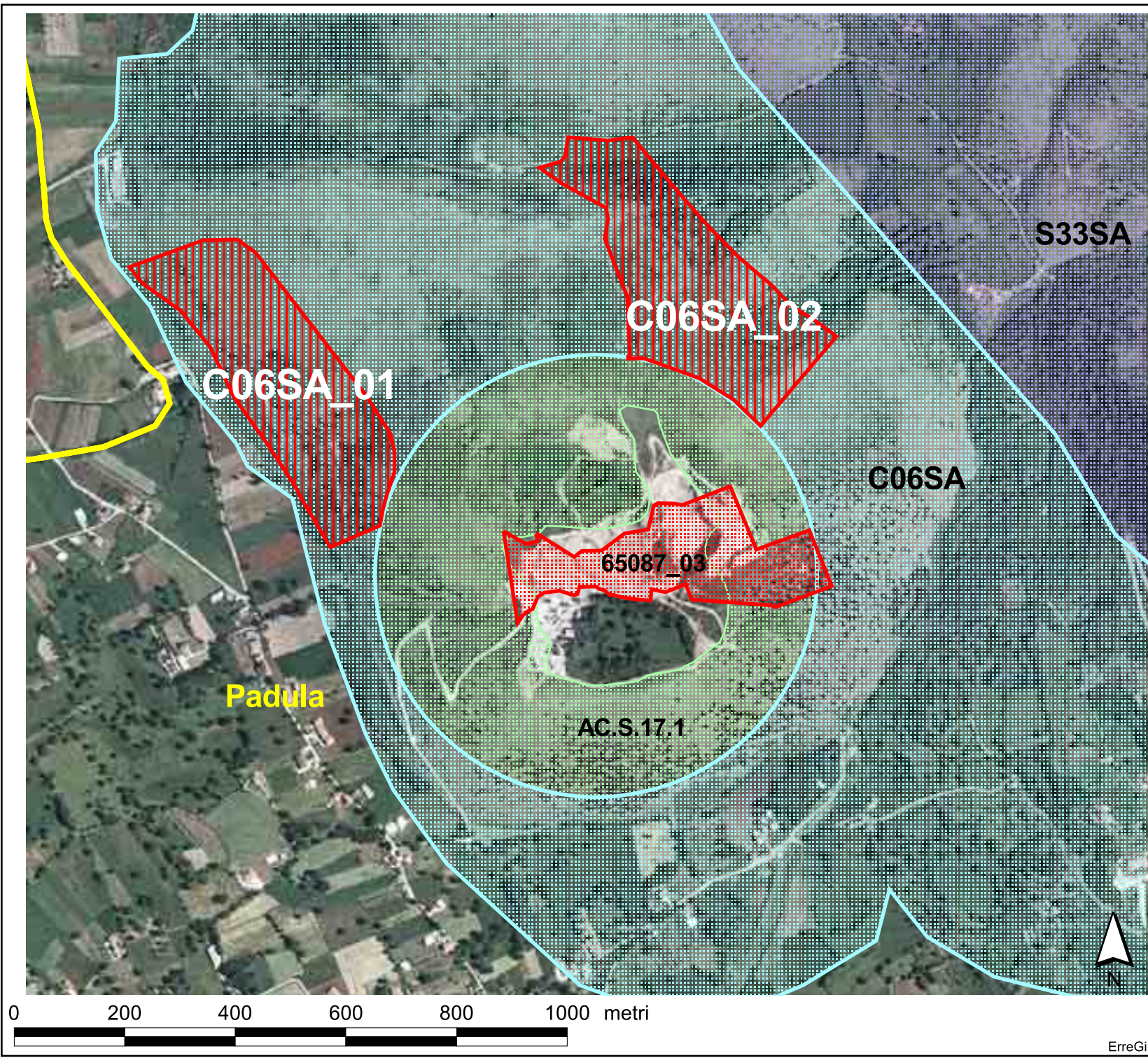



REGIONE CAMPANIA
Settore Provinciale Genio Civile
NAPOLI



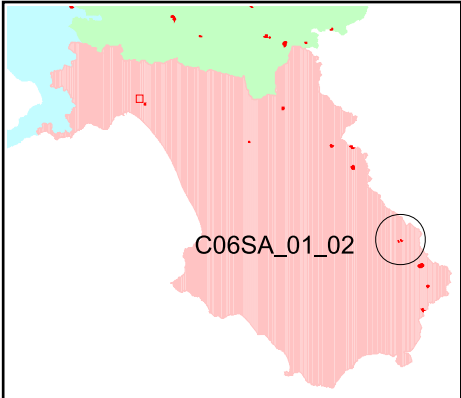
Gruppo Merceologico
CALCARE

-  Comparti
-  Aree di riserva
-  Aree suscettibili nuova estrazione
-  Aree di crisi
-  Cave
-  Limite Comune





REGIONE CAMPANIA
Settore Provinciale Genio Civile
SALERNO



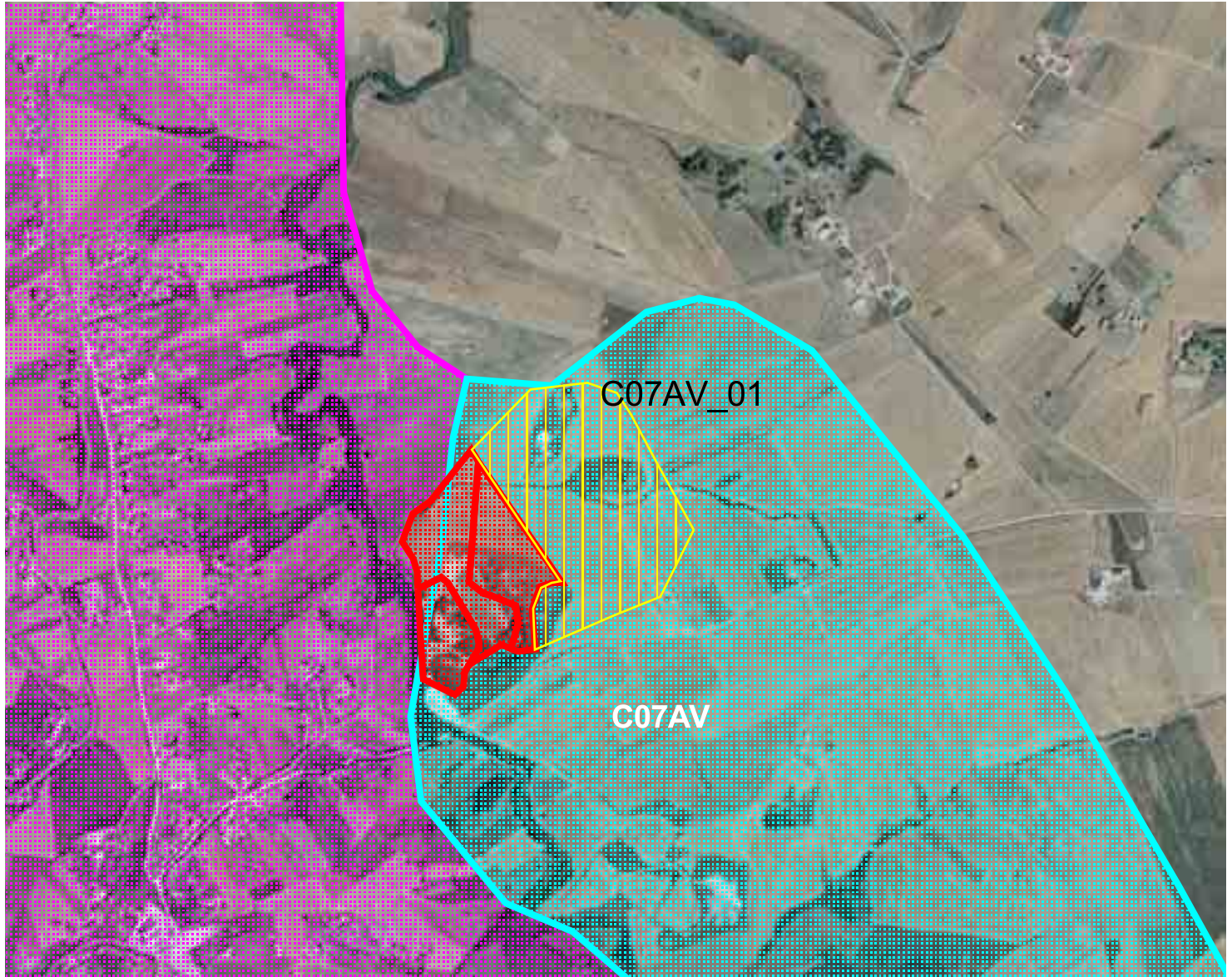
**Gruppo Merceologico
CALCARE**





	Comparti
	Aree di riserva
	Aree suscettibili nuova estrazione
	Aree di crisi
	Cave
	Limite Comune

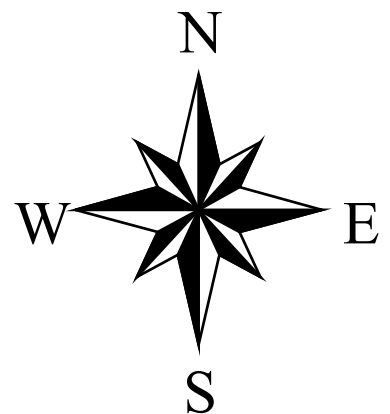
REGIONE CAMPANIA

Settore del Genio Civile

Ariano Irpino



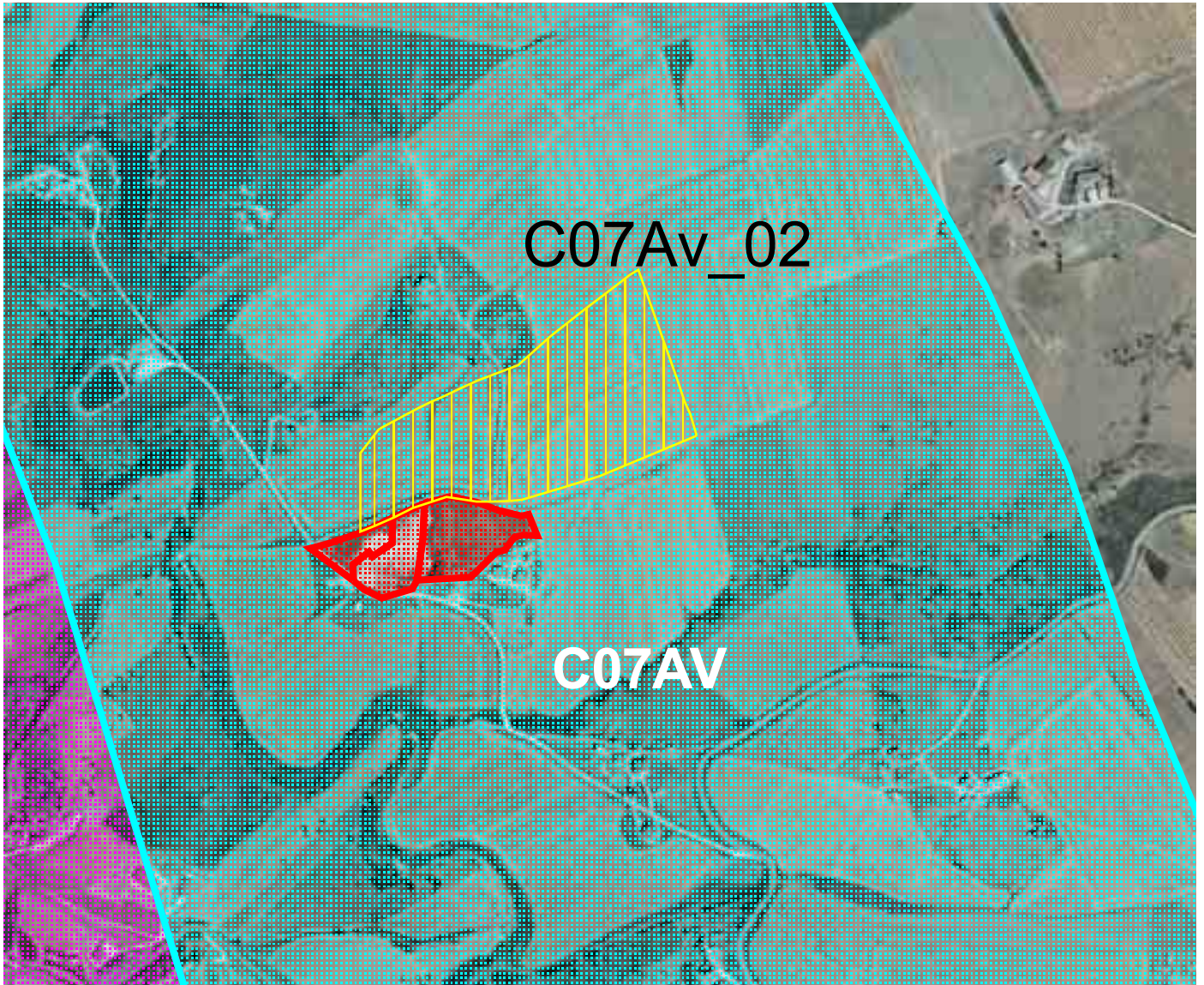
-  Merge1.shp
-  Cave
-  Aree suscettibili nuova estrazione
-  Aree di riserva

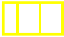





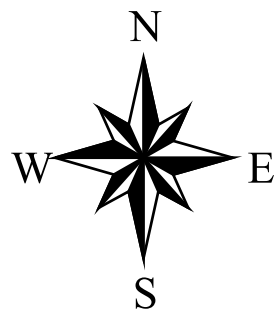
REGIONE CAMPANIA

Settore del Genio

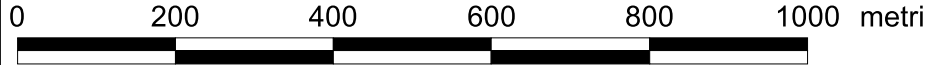
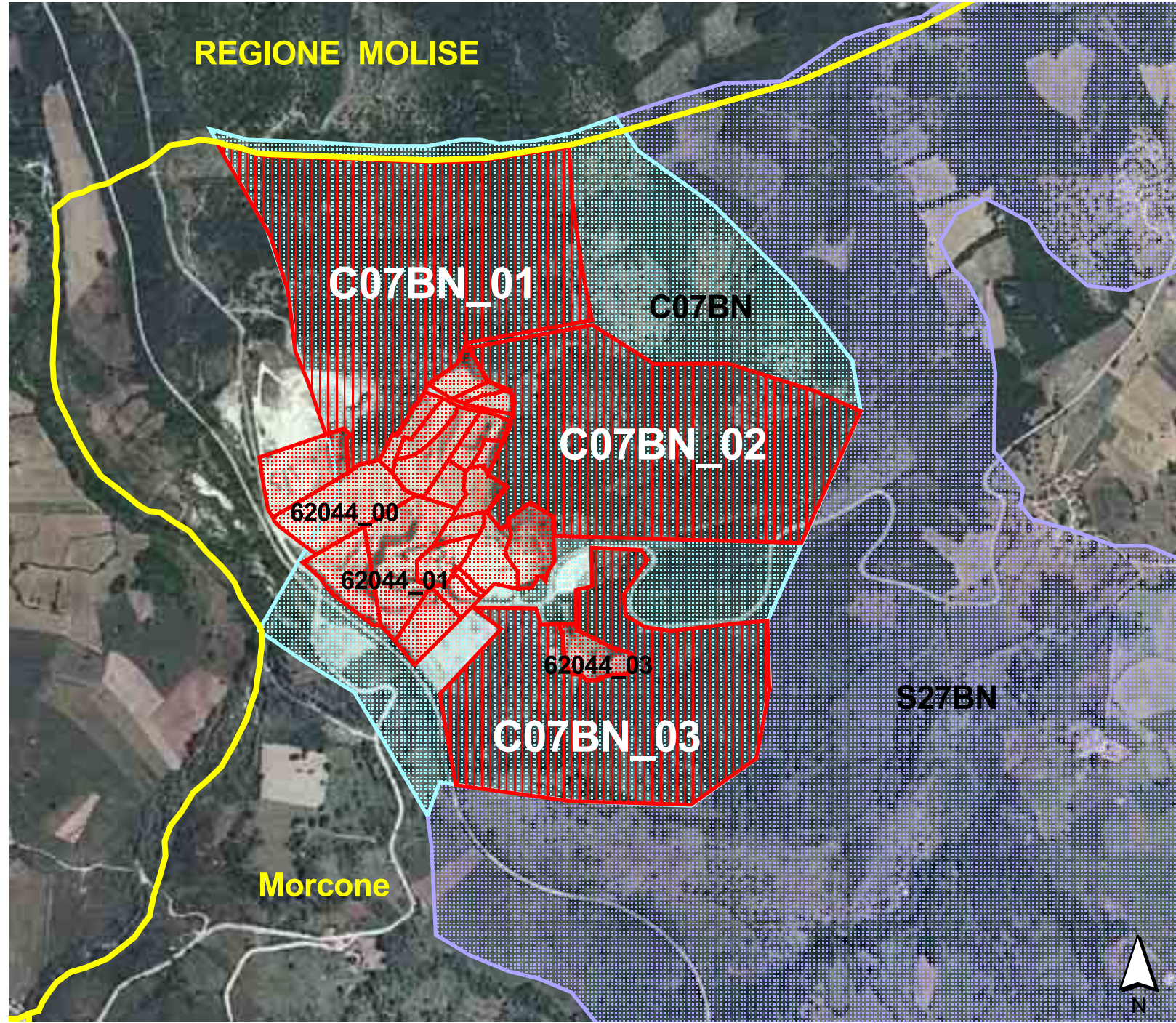
Civile Ariano Irpino



-  Cerverro C07AVshp
-  Cave
-  Aree suscettibili nuova estrazione
-  Aree di riserva



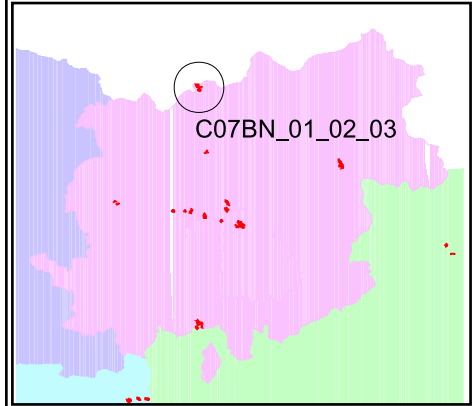
REGIONE MOLISE



ErreGi

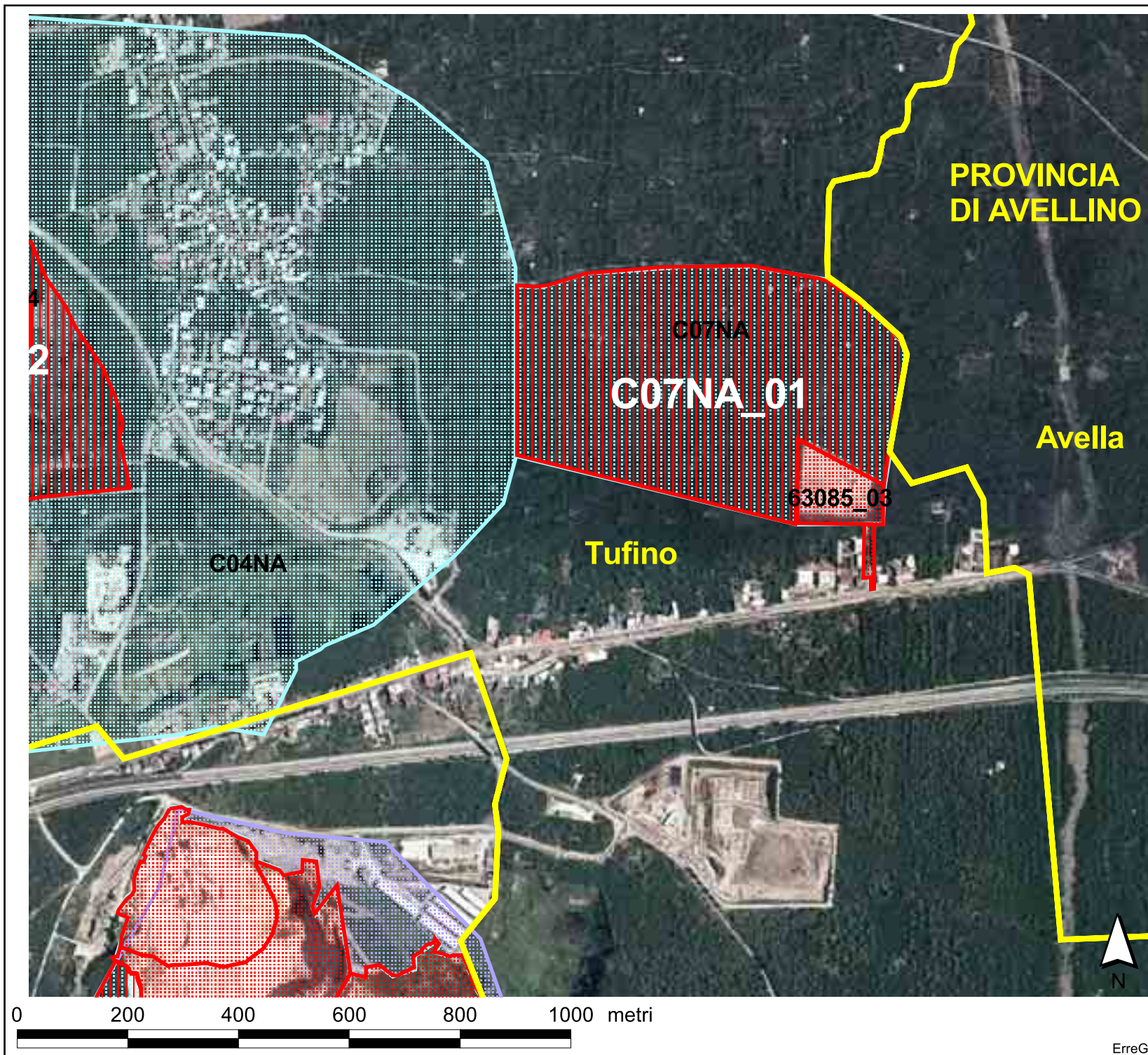



REGIONE CAMPANIA
Settore Provinciale Genio Civile
BENEVENTO



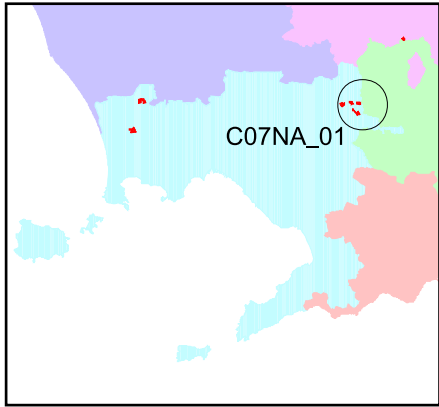
Gruppo Merceologico
CALCARE

-  Comparti
-  Aree di riserva
-  Aree suscettibili nuova estrazione
-  Aree di crisi
-  Cave
-  Limite Comune











REGIONE CAMPANIA
Settore Provinciale Genio Civile
NAPOLI



C07NA_01

Gruppo Merceologico
IGNIMBRITE

	Comparti
	Aree di riserva
	Aree suscettibili nuova estrazione
	Aree di crisi
	Cave
	Limite Comune

ErreGi

Colliano

Contursi Terme

C07SA

C07SA_01

65043_02

S41SA

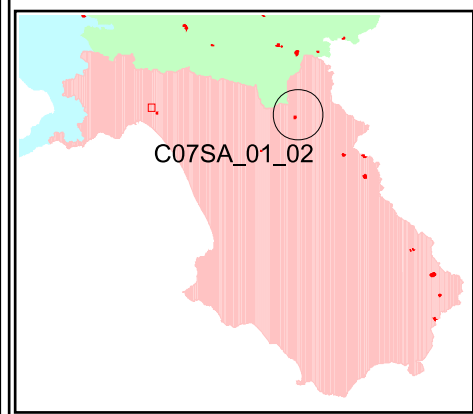
C07SA_02

A.C.S12

0 200 400 600 800 1000 metri



REGIONE CAMPANIA
Settore Provinciale Genio Civile
SALERNO

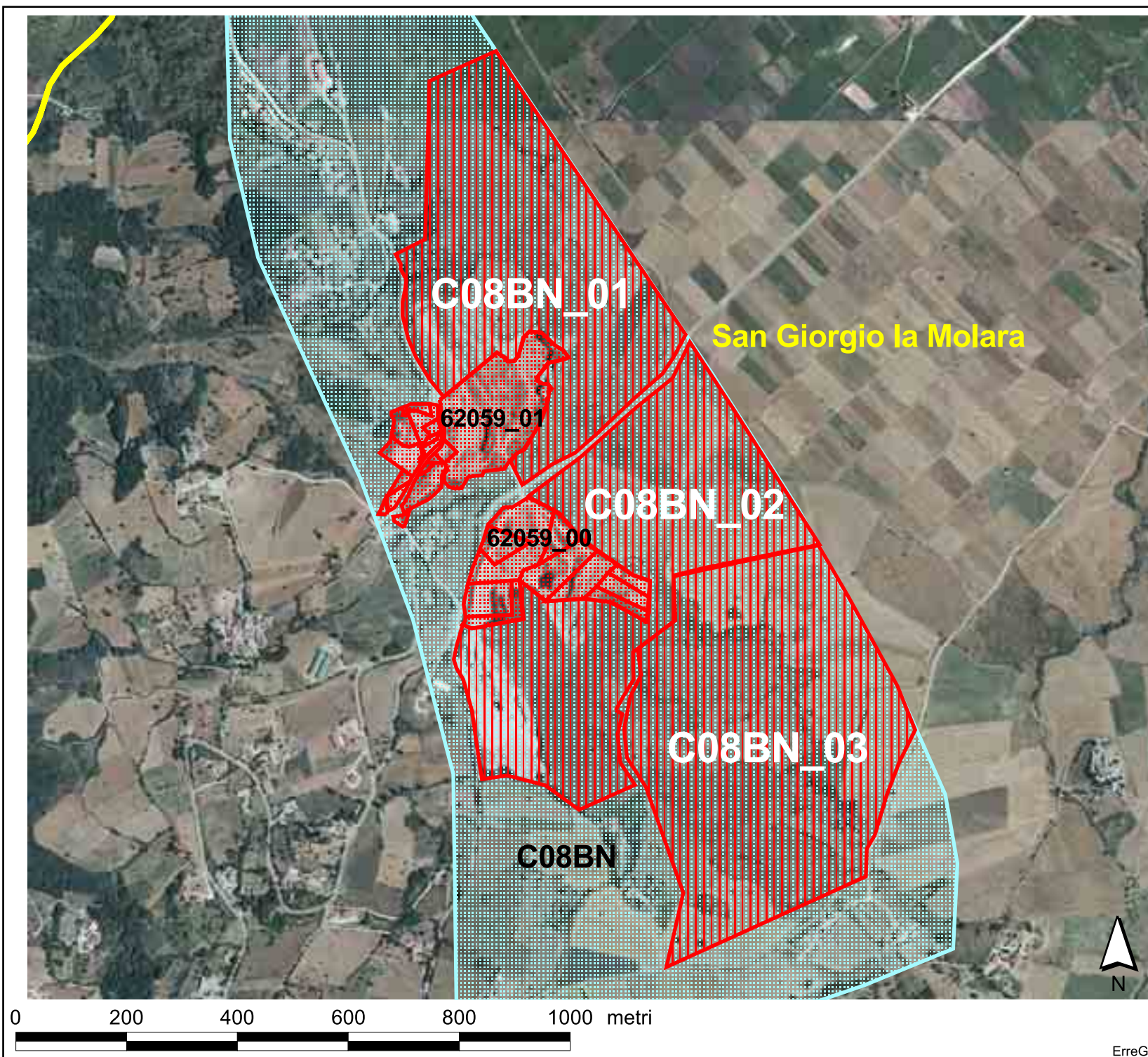


Gruppo Merceologico
CALCARE

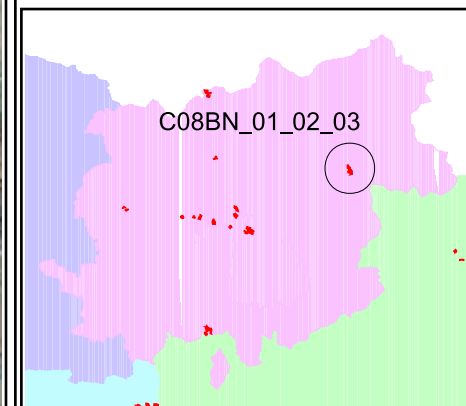
- Comparti
- Aree di riserva
- Aree suscettibili nuova estrazione
- Aree di crisi
- Cave
- Limite Comune



ErreGi



REGIONE CAMPANIA
 Settore Provinciale Genio Civile
 BENEVENTO

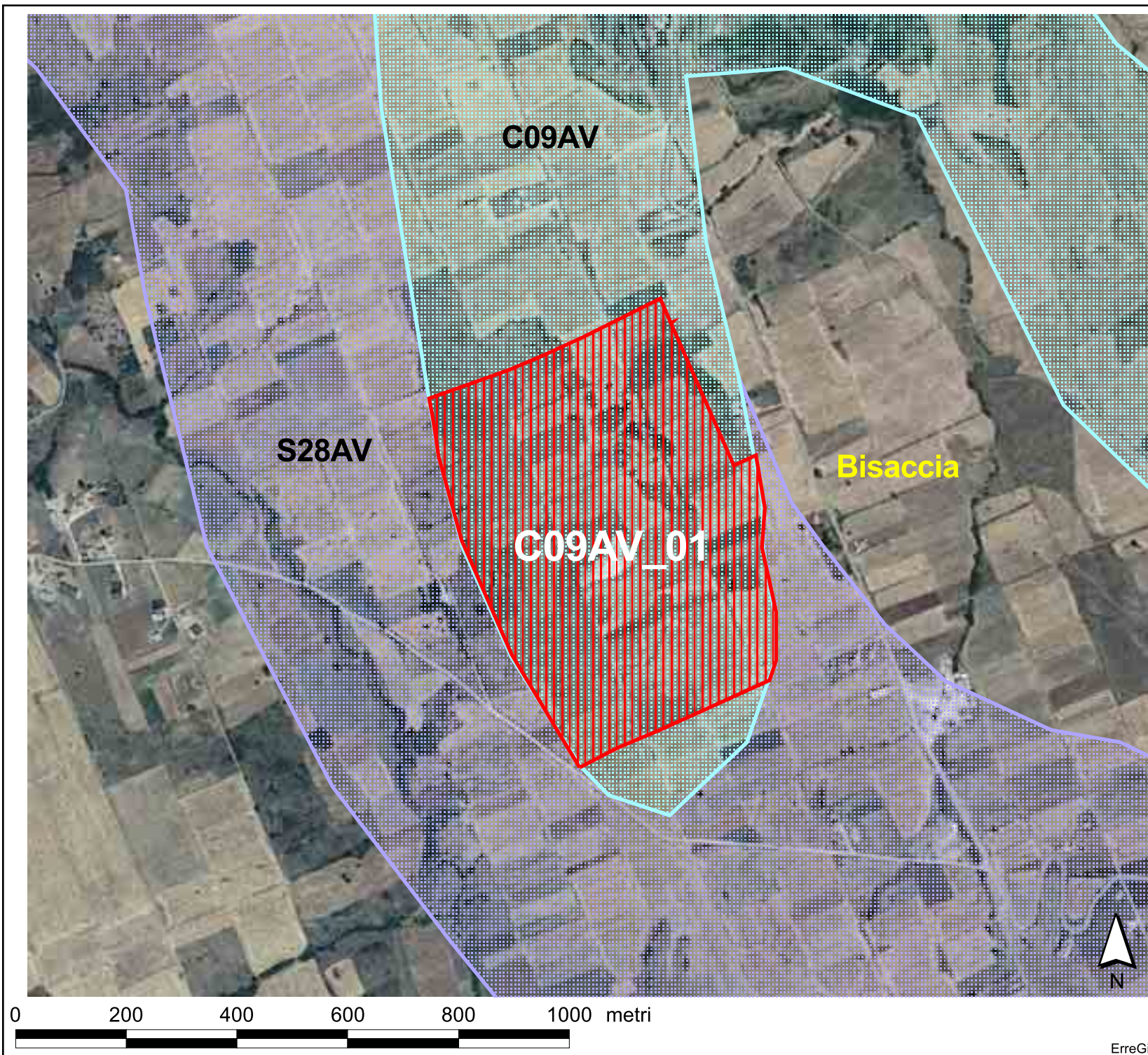


Gruppo Merceologico
 CALCARE

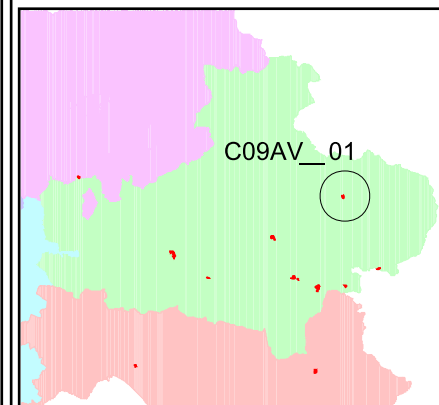
-  Comparti
-  Aree di riserva
-  Aree suscettibili nuova estrazione
-  Aree di crisi
-  Cave
-  Limite Comune



ErreGi



REGIONE CAMPANIA
Settore Provinciale Genio Civile
AVELLINO

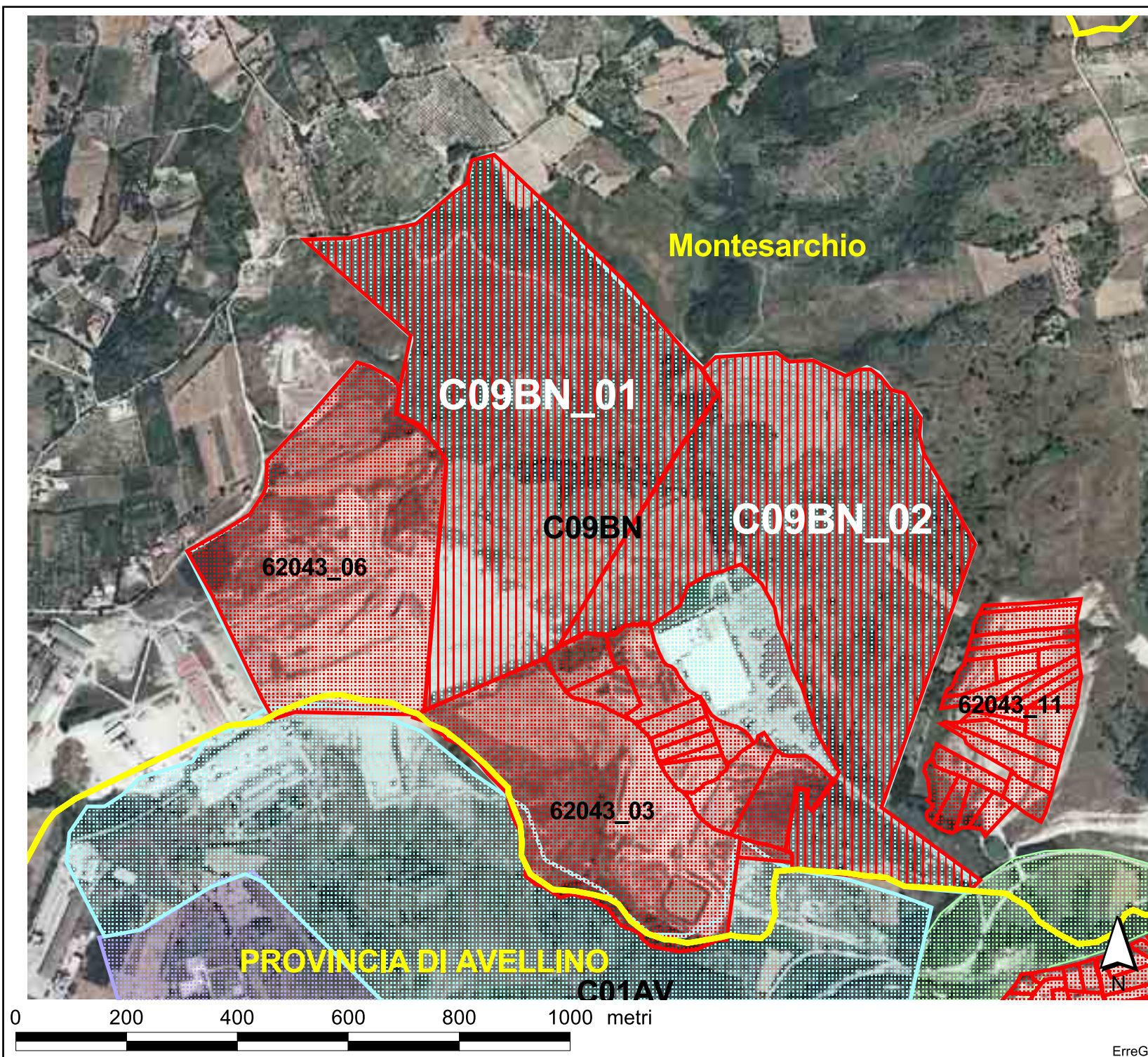



Gruppo Merceologico
CALCARE

-  Comparti
-  Aree di riserva
-  Aree suscettibili nuova estrazione
-  Aree di crisi
-  Cave
-  Limite Comune

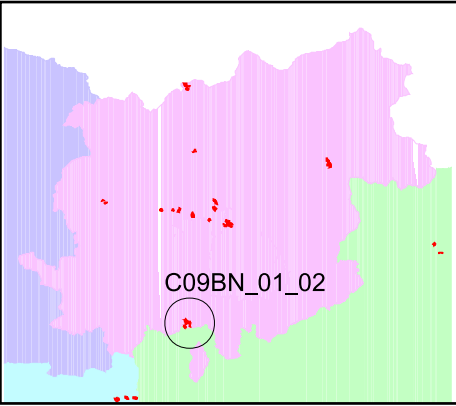


ErreGi





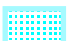
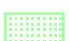





REGIONE CAMPANIA
Settore Provinciale Genio Civile
BENEVENTO



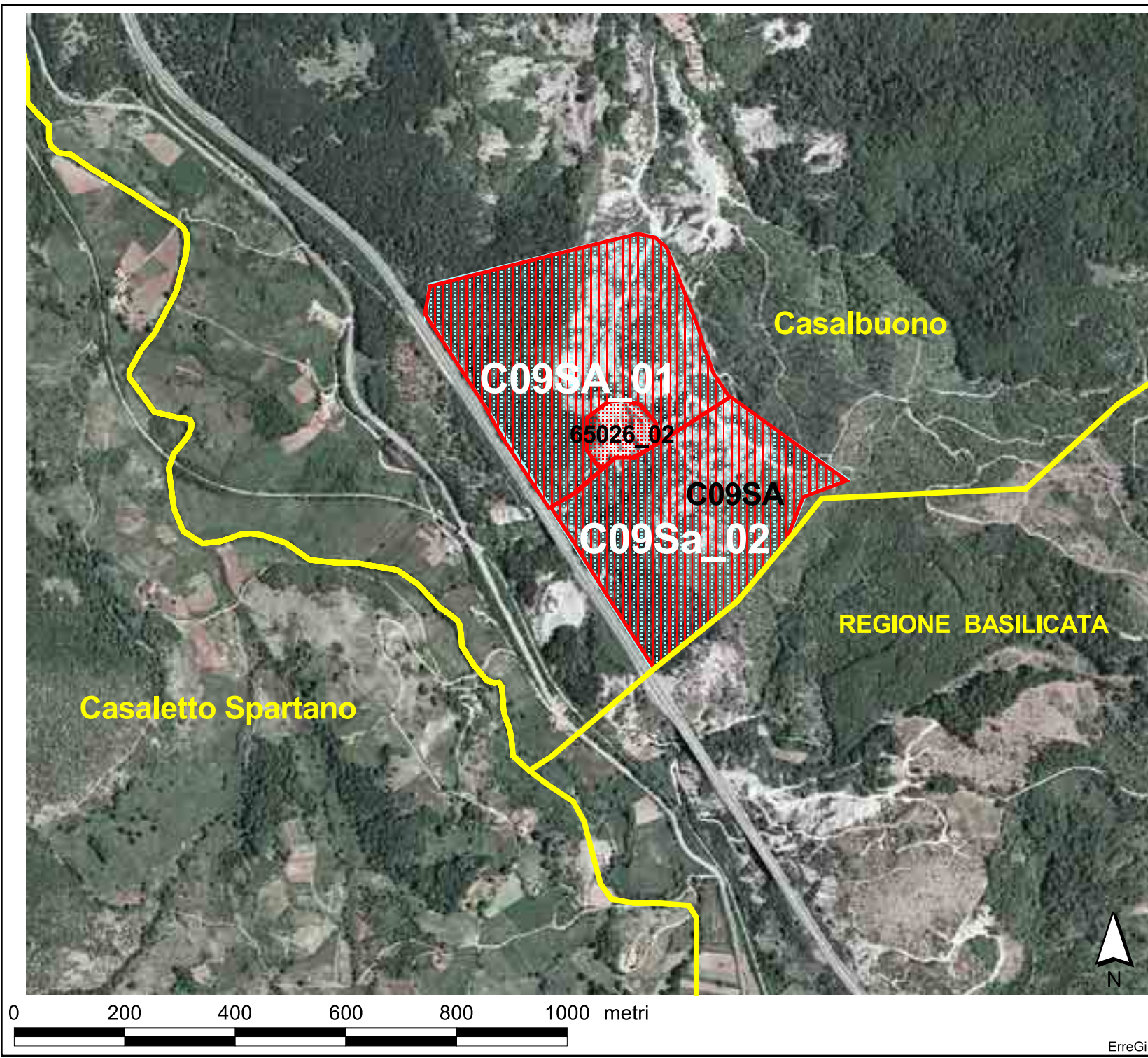
C09BN_01_02

Gruppo Merceologico
ARGILLA

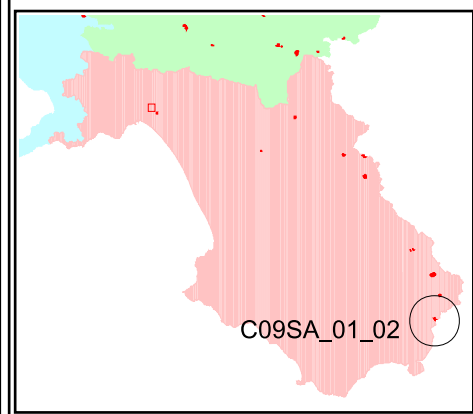
	Comparti
	Aree di riserva
	Aree suscettibili nuova estrazione
	Aree di crisi
	Cave
	Limite Comune



ErreGi



REGIONE CAMPANIA
 Settore Provinciale Genio Civile
 SALERNO



Gruppo Merceologico
 DOLOMIE

-  Comparti
-  Aree di riserva
-  Aree suscettibili nuova estrazione
-  Aree di crisi
-  Cave
-  Limite Comune



ErreGi